

Mango Propagation in South Florida



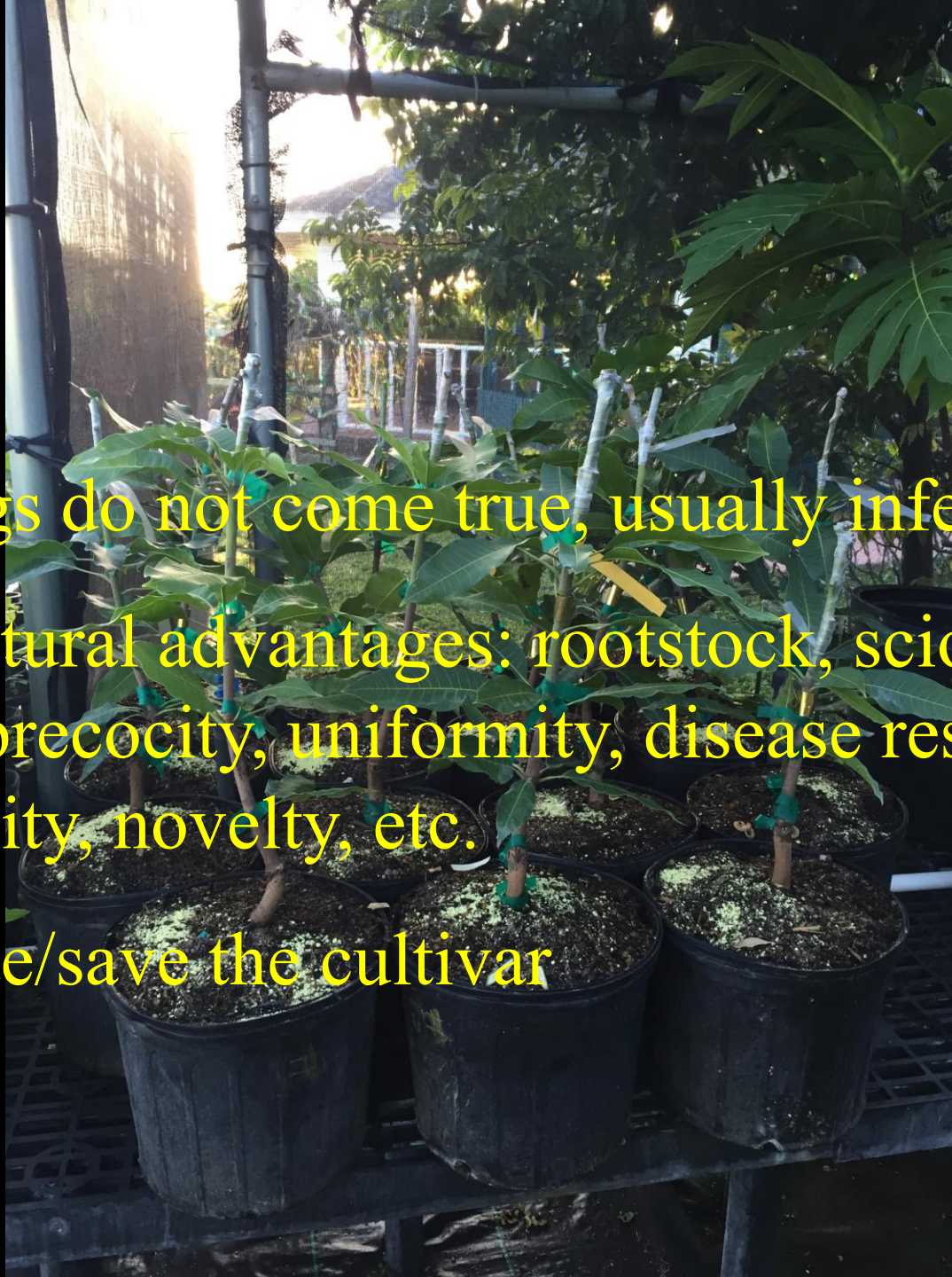
Richard J Campbell, Cecilia de Botton Campbell, Daniel de Botton Campbell,
Ian de Botton Campbell and Thiago de Botton Campbell
Mango Men Homestead, LLC, Homestead, FL

We depend on clonal propagation for success

Graftage is the most efficient and reliable.



- Seedlings do not come true, usually inferior
- Horticultural advantages: rootstock, scion, growth, precocity, uniformity, disease resistance, fruit quality, novelty, etc.
- Renovate/save the cultivar



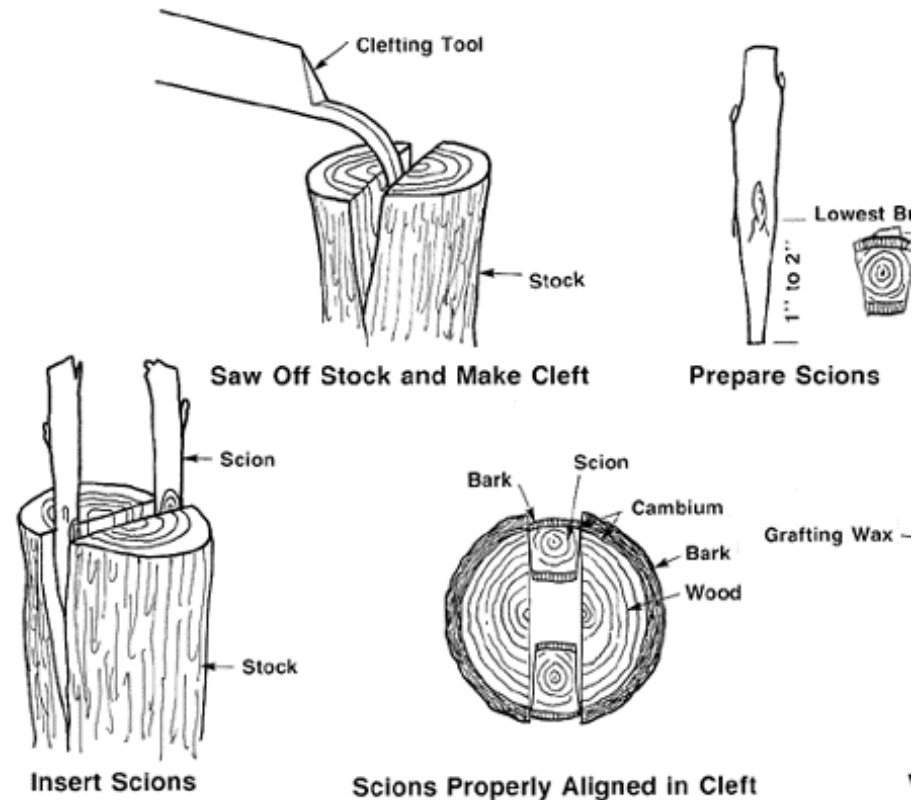
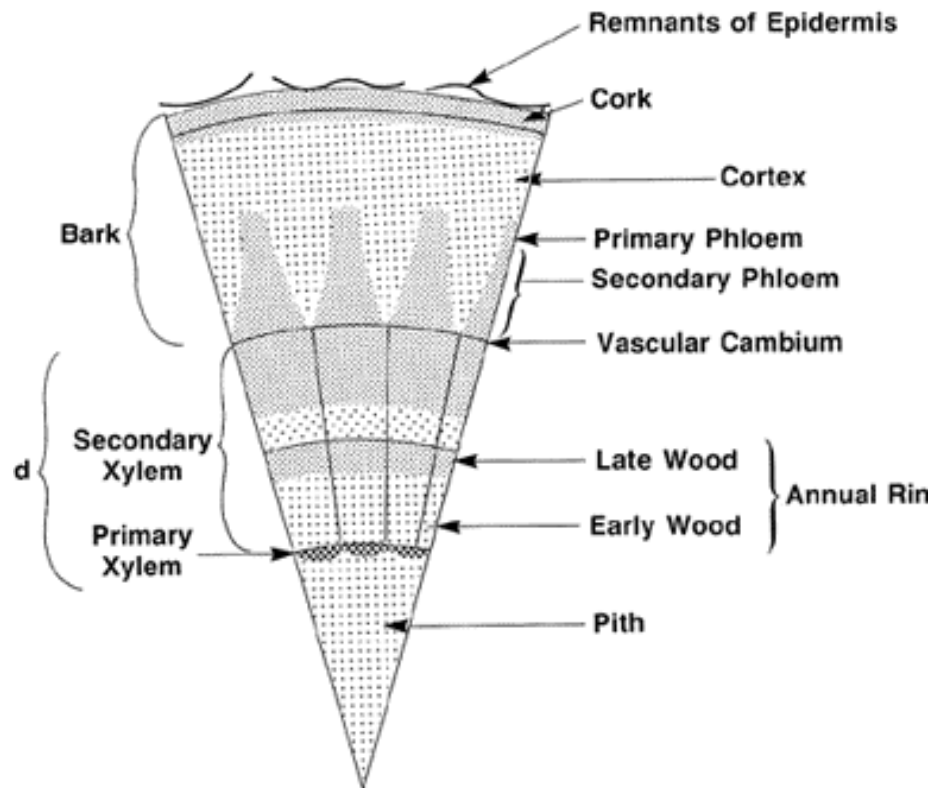
- **'Turpentine' most common rootstock in Florida**
- **Oolitic limestone (alkaline) or sandy (acidic) soils**
- **Alkaline ground water**
- **Salinity issues**
- **Other rootstocks mostly experimental ('Piva', 'Sabre', '13-1')**





- Veneer, cleft grafts for smaller growers/chip budding for large commercial nurseries.

No matter the method, cambium must be joined



When to graft Mangos?

When the material is
available and healthy

Night temps > 65F

Daytime temps 80-90F





- Rootsocks: Healthy, active and pest and disease free. Fertilize a month before, watered
- Scions: Active, healthy, parafilm, 50-60F, do not freeze or expose to heat
- No treatments to scions or rootstocks (fungicides, paints, etc)
- Match species and size of rootstocks and scion





- **Grafting materials for the small-scale grower**



Cleft Graft

- Versatile
- Easy – simple cuts and wrapping
- Fast development for planting
- More destructive to rootstock



Veneer

- Versatility in scion/rootstock size
- More cambium contact
- More skillful cuts
- Reusable rootstocks

Budding



Rootstock



Bud



Budding graft

Aftercare

Remove terminal bud of rootstock

Keep grafted tree moist, shade

Should break bud in 2 to 6 weeks. Can force if not

Remove the plastic

Check the tree constantly



Thank you

