

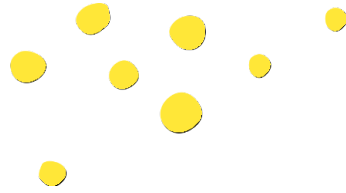


# MANGO PACKAGING

# 5-DOWN PACKAGING STUDY

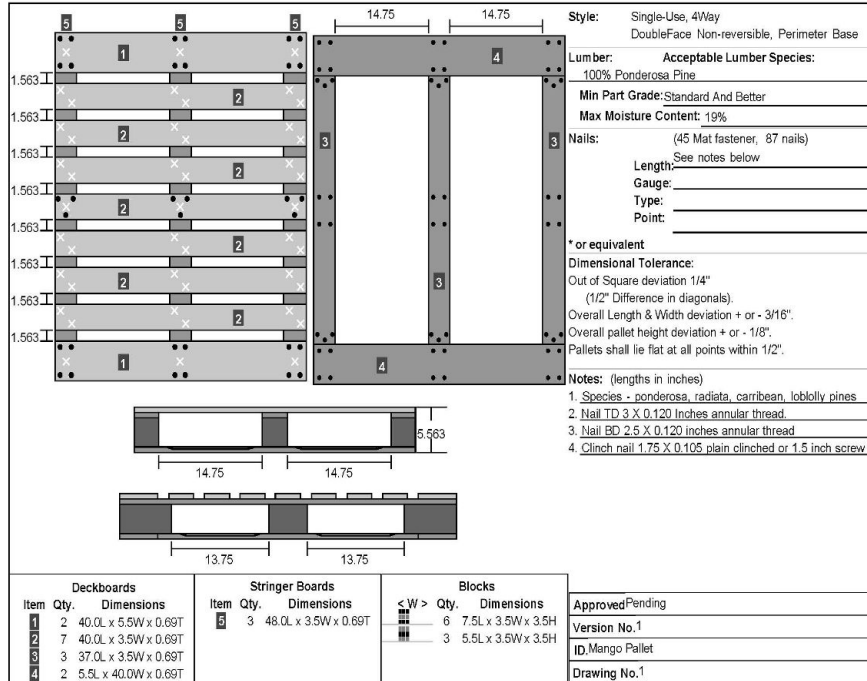


# *PALLET STYLE- SINGLE USE; 4-WAY DOUBLE FACE NON- REVERSIBLE*



# 4 WAY DOUBLE FACE WOODEN PALLET

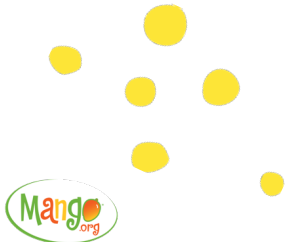
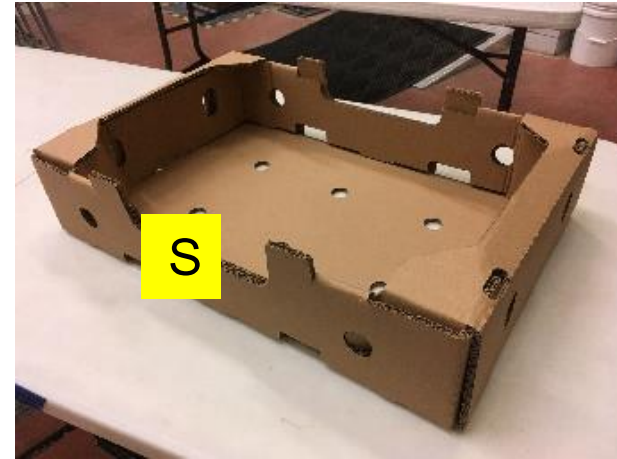
## SPECIFICATIONS



Pallet Analysis		Best Pallet Version 3.3.1o*	
Prepared By: White and Company LLC		Company: Cal Poly	
Analysis ID: SA pine mango pallet.V2		Address:	
Date: Oct 12, 2017		San Luis Abispo	
<b>Pallet Information:</b> 48.0 in L x 40.0 in W, Weight - 47.8 lbs, HT for Export, Single-Use <b>Pallet Description:</b> 4Way, DoubleFace, Non-reversible, Block pallet, Chamfered <b>Pallet Lumber:</b> Ponderosa Pine			
		<b>Analysis Summary</b>  <b>Required Payload:</b> 2600 lbs  <b>Predicted Maximum Safe Load:</b> 2746 lbs  <b>Load Variability:</b> Low	
Analysis			
Storage and Handling Conditions	Predicted Maximum Safe Load (lbs)	Initial Average Deflection (in)	Critical Members
Forkline Parallel to Length	8221	0.3	Top Deckboard
Forkline Perpendicular to Length	2746	0.55	Top Stringer
Stacked 1 High	6757	0.14	Top Stringer
Forkline spacing = 14.25, length = 42.0, and width = 5.0			
<b>Disclaimer:</b> The performance estimates of Best Pallet represent the best available engineering information compiled to date. However, the quality of workmanship, the input data, and the conditions in which pallets are used may vary widely. Therefore, White & Company, LLC cannot accept responsibility for pallet performance or design as actually constructed. Performance estimates from Best Pallet should be verified by testing of prototypes prior to implementation.			
Approved/Pending		Version No.1	
ID: Mango Pallet		Drawing No.1	

# CORRUGATED BOARD SPECIFICATIONS

- Double wall board: B/C Flute
- Water resistant adhesive
- Board Combination 35lb - 36lb - 26lb - 36lb - 35lb (Liner-medium-Liner-Medium-Liner)
- ECT – 73 lb./in





# UPDATED BOX DESIGN

## COMMON FOOTPRINT, 5-DOWN BOX

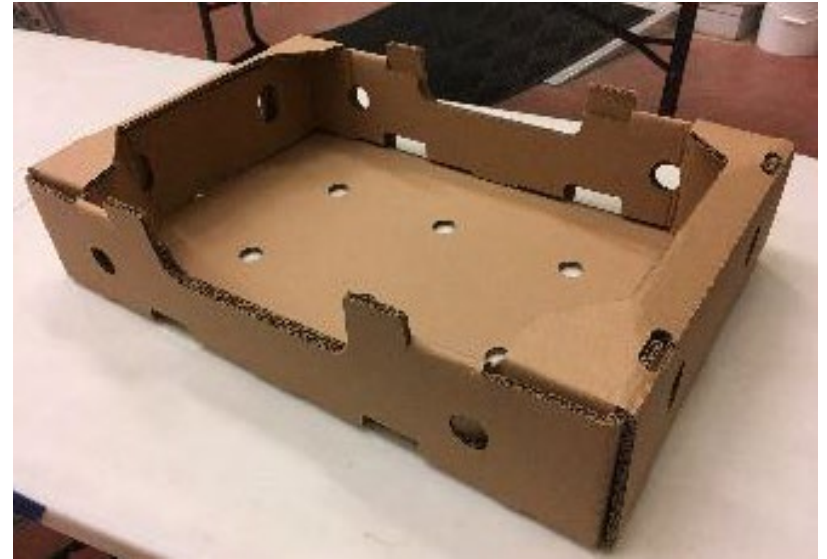


<b>Smurfit Kappa</b> Smurfit Kappa y Papel de México, S.A. de C.V. CompuCable	Cliente: National Mango Board Especifico: Mango IT National Mango Board Producto: Mango	Color: <input type="checkbox"/> DISPONIBLE	Cartón: KRAFT Pausa CB Area: 0.895 Precio Aprox: 0.852 Resistencia: 760EP Dimension Cartón: 88.6 Registro de Imp.: +- 3mm	NOTAS ESPECIALES:
	ID: FD-16 REV-4 MODIFICADO DE DISEÑO GRAFICO	SKU: 3182 Descripción: IT National Mango Board Medidas Internas: 56 x 37 x 11.3 Instrucciones especiales de Calidad		

LOS COLORES MOSTRADOS EN ESTE DISEÑO SON UNA SIMULACIÓN. PARA SEleccionAR LOS TINTOS QUE DESE, DEBEA BUSCARSE EN LA GUIA DE COLORES GCH. QUE EL VENDEDOR LE MOSTRARA. SI DESEA UNA MUESTRA DE LOS TONOS REALES, FAVOR DE SOLICITAR UN ARRASTRE DE TINTA AL VENDEDOR.

Archivo: 30082- Mango IT National Mango Board - 3182 Cambios:	Fecha: 07/11/19	Cliente:	Diseño:
Diseñador: Ana Teresa Escobar Fecha: 01/2019   11 Noviembre   Versión: 1	Ventas:	Producción:	





Thank  
You